



imaginepools®

 www.imaginepools.com

 (800) 997-7665

©2023 Imagine Pools. All rights reserved. Imagine Pools® products are supplied primarily through a network of independently owned and operated dealers authorized to sell and install various products under a license from Imagine Pools®. These dealers are not owners, employees or agents of Imagine Pools® and Imagine Pools® is not responsible for the actions of these dealers or liable for any related damage to persons, property or Imagine Pools® products. For further information regarding the relationship between Imagine Pools® and its dealers and for related advice to purchasers, please refer to the Terms and Conditions portion of the Imagine Pools® website at www.imaginepools.com.

 **Explore**
INDUSTRIES
An Explore Industries Company

welcome to imagine pools®

We are here to help families enjoy Life at its Best™

We believe it's important to do more of what makes you happy. Relaxing in the presence of your own private pool can be the ultimate in what brings joy to your life. If you want to bring more quality to your life, then just add water. Plus, with a composite fiberglass swimming pool from Imagine Pools®, you can host amazing parties and gatherings. Or, if it is solitude and tranquility you desire, then let the staycation begin. The options are endless.





A Beautiful Reflection

of all the things you cherish most

Do you believe in the beauty of your dreams? Imagine Pools® does. Just dream it and we can make it happen. Let your dreams show you the way to your own beautiful backyard pool.



Plug and Play

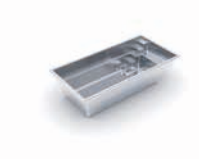
Imagine Pools® offers pools in an array of sizes, shapes, colors and configurations that perfectly suit your tastes and your space. Then, it's simply plug-and-play. Your installer can prep one day and set your pool the next, saving your family from months of backyard chaos.

The Vision™

- + Sharp design allows for both traditional and modern aesthetics
- + Large bench located at the step end with option to incorporate spa jets^[1]
- + Well-positioned entry and exit steps lead down to the pool floor
- + Flat-bottom design is perfect for playing pool games or exercising

^[1] Swim jets sold separately

LENGTH	WIDTH	DEPTH
26' 0"	10' 0"	4' 11"
23' 0"	10' 0"	4' 11"
20' 0"	10' 0"	4' 11"
16' 0"	10' 0"	4' 11"



MODERN STYLE

The Freedom™

- + Large bench located at the step end with option to incorporate spa jets
- + Flat-bottom design is perfect for playing games or exercising
- + Option to incorporate a swim jet system to provide resistance^[1]
- + Convenient entry and exit steps allow access from both sides of the pool

^[1] Swim jets sold separately

LENGTH	WIDTH	DEPTH
30' 0"	13' 0"	4' 11"
26' 3"	13' 0"	4' 11"
22' 11"	13' 0"	4' 11"



MODERN STYLE

Note: The pool measurements referenced throughout this brochure are approximate and may vary due to enhancements in the manufacturing process made after publication. Provided measurements are generally from widest point on each side of outside edges and are provided as a guide. Please consult your Imagine Pools® dealer for more detailed and most current information. Some measurements have been rounded.



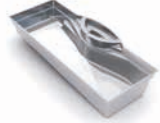
Early Concept
SPECIFICATIONS ARE PRELIMINARY
MEASUREMENTS SUBJECT TO CHANGE

NEW Model will be available in 2024

The Opulence™

- + Unique integrated spa design
- + Intuitive entry and exit steps lead down to the pool
- + Large, unobstructed swim corridor is ideal for games or swimming laps
- + Sleek, modern design allows for unlimited landscaping possibilities

Provided dimensions and specific integrated feature details are pre-production estimates and subject to change.



LENGTH	WIDTH	SHALLOW	DEPTH
32' 10"	14' 5"	4' 0"	6' 0"
29' 6"	14' 5"	4' 0"	5' 10"
26' 3"	14' 5"	4' 0"	5' 9"



NEW Preliminary dimensions subject to change

The Bliss™

- + Large, built-in splash pad with depth of 12" from top to bottom^[1]
- + Convenient entry and exit steps into the pool
- + Full-length swimming channel is excellent for fun or exercise
- + Extended bench allows for multi-swimmer seating and relaxation

[1] Actual water depth will vary upon fill capacity and positioning of the skimmer box



LENGTH	WIDTH	SHALLOW	DEPTH
35' 0"	14' 0"	3' 6"	6' 2"
30' 0"	14' 0"	3' 6"	5' 8"
26' 0"	12' 6"	3' 6"	5' 5"



Note: The pool measurements referenced throughout this brochure are approximate and may vary due to enhancements in the manufacturing process made after publication. Provided measurements are generally from widest point on each side of outside edges and are provided as a guide. Please consult your Imagine Pools® dealer for more detailed and most current information. Some measurements have been rounded.



MODERN STYLE

The Freedom™ with Splash Pad

- + Large splash pad is perfect for young kids to splash and adults to relax with depth of 7" from top to bottom^[1]
- + Flat-bottom design is ideal for games and activities
- + Option to incorporate a swim jet system to provide resistance training for the avid swimmer^[2]
- + Convenient entry and exit steps allow access from both sides of the pool

[1] Actual water depth will vary upon fill capacity and positioning of the skimmer box
[2] Swim jets sold separately



LENGTH	WIDTH	DEPTH
37' 4"	12' 11"	4' 11"
33' 8"	12' 11"	4' 11"
30' 4"	12' 11"	4' 11"



MODERN STYLE

The Illusion™



- + Large, built-in splash pad^[1] that everyone can enjoy
- + Sophisticated, modern styling will enhance all types of backyard designs
- + Entry access from three sides of the splash pad with deep end seats/exit steps
- + Large swimming area for both exercise and fitness

[1] Splash pad depth averages 16" from top to bottom, actual water depth will vary upon fill capacity and positioning of the skimmer box

LENGTH	WIDTH	SHALLOW	DEPTH
40' 0"	15' 4"	4' 5"	6' 11"
35' 0"	15' 4"	4' 5"	6' 6"
30' 0"	15' 4"	4' 5"	6' 0"

The Exquisite™



- + Large, built-in splash pad^[1] is perfect for kids to splash and adults to relax
- + Built-in spa^[2], ideal for therapeutic massage jets^[3]
- + Full-length swimming channel for fun or exercise
- + Extended bench allows for multi-swimmer seating or recreational enjoyment

[1] Splash pad depth averages 20" from top to bottom. Actual water depth will vary upon fill capacity and positioning of the skimmer box
[2] Spa dimensions 5'11" L x 5' 11" W
[3] Seven jets sold separately

LENGTH	WIDTH	SHALLOW	DEPTH
40' 0"	15' 5"	4' 0"	6' 6"
35' 0"	15' 5"	4' 0"	6' 2"
30' 0"	15' 5"	4' 0"	5' 10"



MODERN STYLE

The Marvelous™



- + Features a wide bench seat running the entire length of the pool
- + Large, unobstructed swimming corridor is ideal for games or swimming laps
- + Well-positioned entry and exit steps lead down to the pool floor
- + Sleek, modern design allows for unlimited landscaping possibilities

LENGTH	WIDTH	SHALLOW	DEPTH
40' 0"	15' 6"	4' 0"	6' 6"
35' 0"	15' 6"	4' 0"	6' 1"
30' 0"	15' 6"	4' 0"	5' 10"



Note: The pool measurements referenced throughout this brochure are approximate and may vary due to enhancements in the manufacturing process made after publication. Provided measurements are generally from widest point on each side of outside edges and are provided as a guide. Please consult your Imagine Pools® dealer for more detailed and most current information. Some measurements have been rounded.



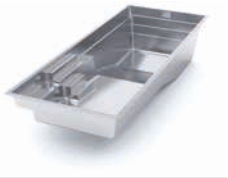
MODERN STYLE



MODERN STYLE

The Celebration™

- + Features a large swim corridor ideal for avid swimmers
- + Shallow end entry-side bench seating offers an area for relaxation
- + Plunging 8' deep end depth is perfect for enjoying underwater games



LENGTH	WIDTH	SHALLOW	DEPTH
40' 0"	15' 6"	4' 0"	8' 0"



FREEFORM STYLE

The Brilliant™

- + Built-in spa located at the shallow end next to entry steps and splash pad
- + Water cascades through spa spillovers providing a beautiful water feature
- + Large, built-in splash pad^[1] is the perfect space for adults and children
- + Secondary bench area located at the deep end of the pool



LENGTH	WIDTH	SHALLOW	DEPTH
40' 0"	15' 6"	4' 8"	6' 8"
35' 0"	15' 6"	4' 8"	6' 4"
30' 0"	15' 6"	4' 8"	6' 0"



Note: The pool measurements referenced throughout this brochure are approximate and may vary due to enhancements in the manufacturing process made after publication. Provided measurements are generally from widest point on each side of outside edges and are provided as a guide. Please consult your Imagine Pools® dealer for more detailed and most current information. Some measurements have been rounded.

[1] Splash pad depth averages 20" from top to bottom. Actual water depth will vary upon fill capacity and positioning of the skimmer box.

The Fantasy™



- + Free-flowing design provides softness of curvature without loss of swim space
- + Convenient entry and exit steps located at both the shallow and deep ends
- + Design allows for numerous landscaping options
- + Built-in shallow end bench^[1] that everyone can enjoy

FREEFORM STYLE



LENGTH	WIDTH	SHALLOW	DEPTH
35' 0"	14' 6"	3' 6"	6' 6"
30' 0"	14' 0"	3' 6"	6' 0"
26' 0"	12' 6"	3' 6"	5' 7"

[1] Bench depth approximately 24". Actual water depth will vary upon fill capacity and positioning of the skimmer box.



FREEFORM STYLE

The Inspiration™



- + Curved design invokes feelings of relaxation without compromising swim space
- + Secondary bench area located at the deep end of the pool^[1]
- + Convenient entry and exit steps into the pool
- + Large, built-in splash pad^[2] provides the perfect playground for adults and children alike

[1] Secondary bench not available on 23' and 26' models
[2] Splash pad depth averages 16" from top to bottom. Actual water depth will vary upon fill capacity and positioning of the skimmer box



LENGTH	WIDTH	SHALLOW	DEPTH
40' 0"	15' 6"	4' 2"	6' 8"
35' 0"	15' 6"	4' 2"	6' 4"
30' 0"	15' 6"	4' 2"	6' 0"
26' 0"	13' 0"	4' 1"	5' 7"
23' 0"	13' 0"	4' 1"	5' 5"

Add a Splash of Color

with eight beautiful options

Happiness is a day at the pool, right? From an afternoon of play making waves and creating a splash to a relaxing evening by the ambient glow of the pool lights at dusk, the possibilities for family, friends, fun and fitness are endless.

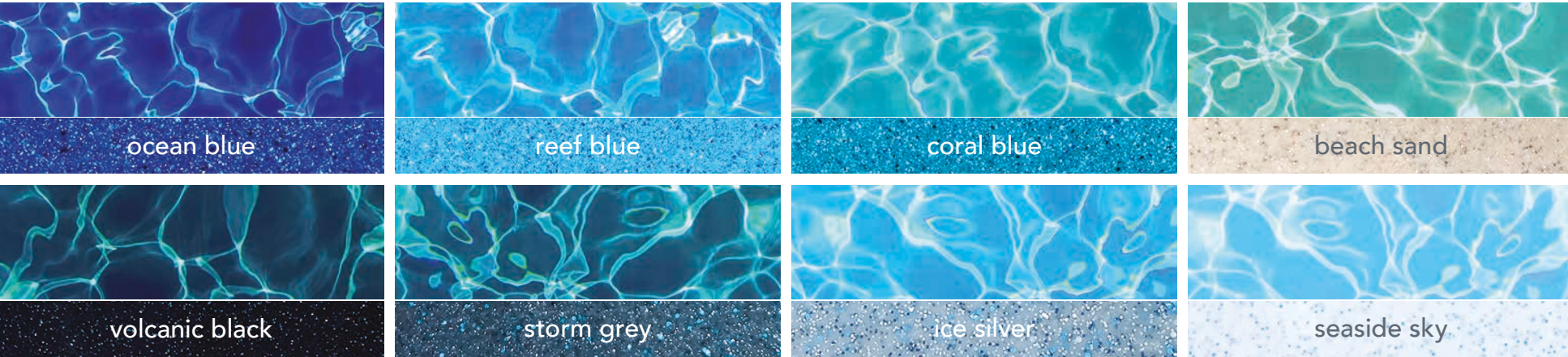
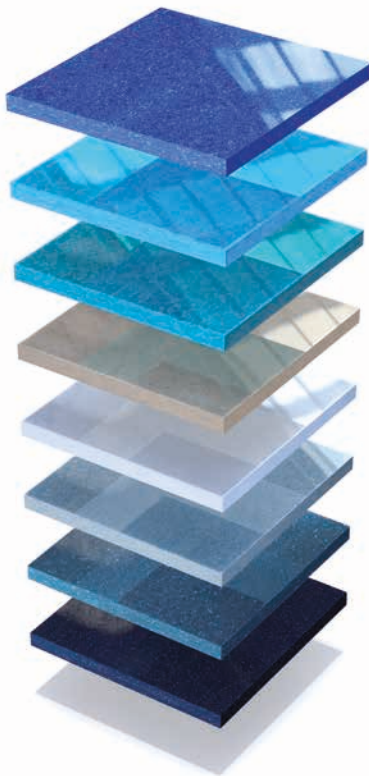
We offer the deepest, richest, and highest quality gelcoat finishes on the market today. But more than just aesthetics, our gelcoat has been specifically designed with increased UV and chemical

+ 10-Year Surface Warranty

resistance to prevent color fading due to sun exposure. In addition, unlike the rough and porous surface of a traditional concrete pool, the smooth polish of our gelcoat does not allow for pits to form in the surface, which could otherwise invite the development of hard-to-scrub algae. This inviting coating also creates a barrier between the swimmer and the structural fiberglass. A special texture is intentionally applied along interior steps and ledges to increase friction under foot in areas where traction is needed.

Our dedication to development and commitment to using quality materials are how we can ensure optimal performance and lasting beauty with a 10-year Surface Warranty on every Imagine Pools® composite fiberglass swimming pool.

*Terms and conditions apply. See full warranty for complete details.





Upgrade Options

Imagine Pools® invites you to elevate your pool experience by adding a spa or tanning ledge to complement your lifestyle and make resort-style living a fun part of your daily routine that is always within reach.

The Treasure™ Stand Alone Round Spa

- + Circular design creates a beautiful focal point for landscaping
- + Optional spillover version offers a water feature focal point
- + Available in any color within the Imagine Pools® color range



LENGTH	WIDTH	DEPTH
7' 8"	7' 8"	2' 10"



The Dream™ Stand Alone Square Spa

- + Ergonomical seating designed to contour the body
- + Optional spillover version offers a water feature focal point
- + Available in any color within the Imagine Pools® color range



LENGTH	WIDTH	DEPTH
7' 3"	7' 3"	3' 2"



The Mystique™ Stand Alone Square Spa

- + Open seating format allows flexibility in use
- + Optional spillover version offers a water feature focal point
- + Available in any color within the Imagine Pools® color range



LENGTH	WIDTH	DEPTH
6' 10"	6' 10"	3' 0"



Note: The pool measurements referenced throughout this brochure are approximate and may vary due to enhancements in the manufacturing process made after publication. Provided measurements are generally from widest point on each side of outside edges and are provided as a guide. Please consult your Imagine Pools® dealer for more detailed and most current information. Some measurements have been rounded.

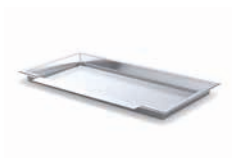




The Lagoon™

Stand Alone XL Tanning Ledge

- + Ultimate luxury addition to any Imagine Pools® swimming pool
- + Expanded length allows for multiple chairs and umbrella stands
- + Wonderful area for young children to play
- + Perfect space for pets to splash in and cool down



LENGTH	WIDTH	DEPTH
14' 0"	7' 3"	0' 11"



The Pearl™

Stand Alone Curved Tanning Ledge

- + Easily installed alongside curved-walled models
- + Accommodates one or two lounge chairs
- + Add bubblers and/or fountains for more fun
- + Choose either one or three spillways



LENGTH	WIDTH	DEPTH
10' 4"	7' 3"	1' 1"



The Mercury™

Stand Alone Rectangular Tanning Ledge

- + Easily installed alongside straight-walled models
- + Accommodates one or two lounge chairs
- + Add bubblers and/or fountains for more fun
- + Choose either one or three spillways



LENGTH	WIDTH	DEPTH
10' 5"	7' 0"	1' 1"



Note: The pool measurements referenced throughout this brochure are approximate and may vary due to enhancements in the manufacturing process made after publication. Provided measurements are generally from widest point on each side of outside edges and are provided as a guide. Please consult your Imagine Pools® dealer for more detailed and most current information. Some measurements have been rounded.

The Waterwall™

Water Feature

- + Minimalistic design with considerable visual appeal
- + Choose from either 2' or 4' silkflow sheer descent
- + Option to illuminate cascade with color-changing LED lights
- + Offered in a base color of basalt and ready to clad or tile



LENGTH	WIDTH	DEPTH
7' 10"	2' 0"	2' 0"
4' 0"	2' 0"	2' 0"



The Cascade™

Water Feature

- + Creates a stunning silhouette by the pool
- + Choose from either 2' or 4' silkflow sheer descent
- + Option to illuminate cascade with color-changing LED lights
- + Offered in a base color of basalt and ready to clad or tile



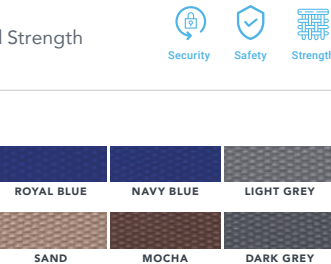
LENGTH	WIDTH	DEPTH
8' 0"	4' 0"	2' 0"



Automatic Pool Covers

Security, Safety and Strength

For years of reliable protection for your fiberglass swimming pool, an automatic pool cover is your best bet. Our custom pool covers from Integra Pool Covers™ extend and retract automatically as they cover and uncover your pool. An automatic pool cover checks all of the boxes for safety, convenience and ease of use.



- + Automated Ease of Use
- + Ease of Maintenance
- + Safety Around the Pool
- + Improves Energy Efficiency
- + Extend the Pool Season
- + Looks Great





Industry Advancements

Imagine Pools® swimming pools are engineered with high-performance woven into each and every layer. The result is a top quality composite pool with extraordinary structural integrity, durability and corrosion resistance.

Centurion Core construction process



To construct a fiberglass pool, it must be comprised of three main components: *the pool's gelcoat surface*, *the pool's structural shell* and *the ground in which the pool will be placed*. Each component is affected by the other two, thus all three must be considered carefully. Our commitment to technological advancements through years of research and development has resulted in a top quality composite pool with extraordinary structural integrity, durability and corrosion resistance. In layman's terms, this means each pool we build is intentionally made with the quality of every component at top of mind. All of the products from Imagine Pools® are built under strict quality controls and must also meet the ICC ESR-3868 certification requirements, but we don't stop there.

lifetime structural warranties

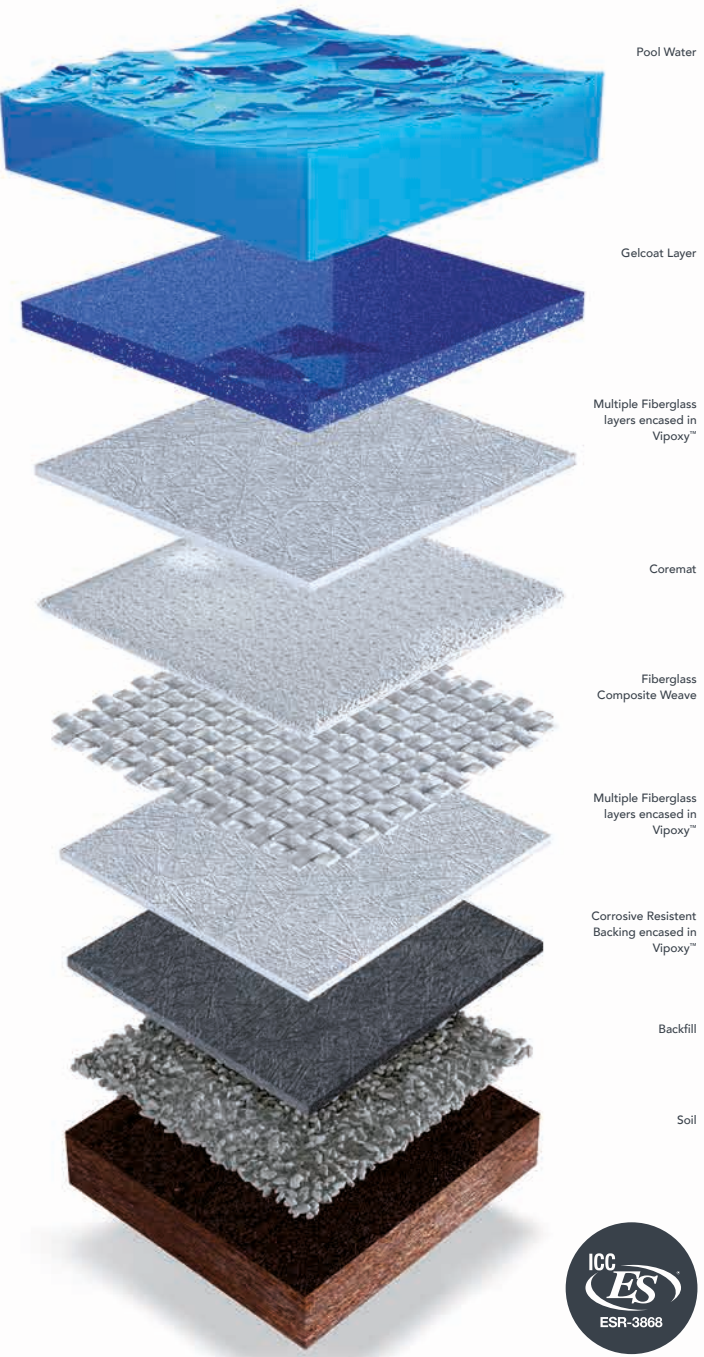
From the outside, your pool shell may look relatively uncomplicated. However, beneath the surface, there is a team of players fast at work to ensure your fiberglass pool is durable, strong and can withstand the test of time. To that end, we have incorporated alternating layers of different fiberglass materials, each individually encased in a full saturation of durable Vipoxy™ Vinyl Ester Resin Blend. Translation? Your pool is doing what it is supposed to do: protecting itself from any structural adversities while simultaneously giving you peace of mind. We simply don't know how to do anything other than create the best pool for our customers. In fact, we stand behind that layer of confidence by covering every one of our fiberglass pools with our **Lifetime Structural Warranty** AND our **Lifetime Structural Osmosis Warranty**.

+ Lifetime Structural Warranty

The Lifetime Structural Warranty is your guarantee of a composite swimming pool with high tensile strength, capable of withstanding the impact of natural ground movements from the environment.

+ Lifetime Structural Osmosis Warranty

The Lifetime Structural Osmosis Warranty is your guarantee of a composite swimming pool which will act as an impermeable membrane, preventing both pool water and groundwater from penetrating into the structural laminate.



Resin 101

The fiberglass pool industry adheres to two standards for resin: polyester resin and Vinyl Ester Resin:

- + *Polyester resins* are created when glycol and dibasic acid interact and are then cured with a hardener additive.
- + *Vinyl Ester Resin* is produced by the reaction between an epoxy resin and an unsaturated acid and then cured with a hardener additive.

So why is Vinyl Ester Resin the best choice for a swimming pool?

- + During the process of mixing together Vipoxy™ Vinyl Ester Resin components, the backbone of the Vinyl Ester Resin's molecular chain is reinforced, strengthened with epoxy molecules, then hardened.
- + The resulting solid has far fewer open sites in its molecular chain for water to penetrate into than that of Polyester Resin, protecting the pool against hydrolisis (osmosis).

Vipoxy™ Vinyl Ester Resin

polyester resin vs vinyl ester resin

You don't have to be a scientist to own a pool from Imagine Pools®, but we do want to let you know when it comes to resin, we only incorporate the right compositions for the job. For your fiberglass pool to live up to its lifetime promise, durability and strength, it has to be protected against ground movement and groundwater penetration. Therefore, it should have **tensile strength** that allows it to comfortably move with the ground without cracking while at the same time serving as an **impermeable membrane** that keeps chemically treated pool water from leaching out. Most important, it must also prevent any groundwater from finding its way into the back of the pool shell and making a home in the structural layers of resin and fiberglass.

the superiority of Vipoxy™ vinyl ester resin



We could tell you our fiberglass swimming pools are formed with Vipoxy™ Vinyl Ester Resin that is hydrolysis-resistant, osmosis-resistant and delamination-resistant, but it is just as easy to say each pool is designed to become an **impermeable membrane** with an air-tight adherence between the resin and the fiberglass materials used in the construction of the shell. Vipoxy™ is also less sensitive to ambient conditions and experiences less shrinkage during the curing process than a pool built with polyester resin. This provides a tremendous amount of **tensile strength** that allows the pool to absorb any impact from ground movement without developing signs of stress cracking.

Lifetime Warranty

providing peace of mind



Even though it may not be as exciting as jumping into your new fiberglass swimming pool and making amazing memories with your family and friends, a pool warranty can make a cannon ball-like splash when it comes to insuring your investment. A comprehensive pool warranty covers the costs of repairs your pool might need in the future while providing best care practices to ensure you get the most out of the lifetime of your pool.

At Imagine Pools®, we understand how important it is to you to protect your investment. It's equally important to us, too. Therefore, having not only the best warranty but the right warranty is an essential aspect of safeguarding your pool. Our warranties are comprehensive, 1-time transferrable*, and an integral part of each and every one of our fiberglass pools. You benefit by protecting your pool from the unknown while also giving you the peace of mind you need.

global support, region distribution

Imagine Pools® is proud to create the world's best composite fiberglass swimming pools which are distributed by more than 600 talented, independently owned and operated dealerships throughout the United States and Canada. We invite you to learn more about our products by talking to one of our authorized independent dealers and asking for a free estimate so that you can truly enjoy Life at its Best™.

*Terms and conditions apply. See full warranty for complete details.

Note: The pool measurements referenced throughout this brochure are approximate and may vary due to enhancements in the manufacturing process made after publication. Provided measurements are generally from widest point on each side of outside edges and are provided as a guide. Please consult your Imagine Pools® dealer for more detailed and most current information. Some measurements have been rounded.





imaginepools®

 www.imaginepools.com

 (800) 997-7665

©2023 Imagine Pools. All rights reserved. Imagine Pools® products are supplied primarily through a network of independently owned and operated dealers authorized to sell and install various products under a license from Imagine Pools®. These dealers are not owners, employees or agents of Imagine Pools® and Imagine Pools® is not responsible for the actions of these dealers or liable for any related damage to persons, property or Imagine Pools® products. For further information regarding the relationship between Imagine Pools® and its dealers and for related advice to purchasers, please refer to the Terms and Conditions portion of the Imagine Pools® website at www.imaginepools.com.

 **Explore**
INDUSTRIES
An Explore Industries Company